

Dr.Q 分子生物試劑



Dr.Q MMLV Reverse Transcriptase
Product name: Dr.Q MMLV
Reverse Transcriptase,10000u
Catalogue no.:Dr.QRT001

Cat No	Pack size	conc
Dr.QRT001	10000u	200U/ul

Description

MMLV Reverse Transcriptase, from Murine Leukemia virus, is an RNA-dependent DNA polymerase. It synthesizes the cDNA first strand from a single-stranded RNA template to which a primer has been hybridized. MMLV RT also can extend primers hybridized to single-stranded DNA. Second strand cDNA synthesis can be achieved from some RNA templates without an additional DNA polymerase. M-MLV RT (H-) can synthesize 9.5kb products, the largest RNA component in the reaction. However, M-MLV RT synthesized more Full-length cDNA regardless of size.

Storage conditions

-20°C

Unit description

One unit of activity is the amount of enzyme required to incorporate 1 nmole of dNTP into an acid-insoluble form in 10 minutes at 37°C using polyA-oligo (dT) as template and primer.

Supplied 5xRT buffer

TrisHCl, pH 8.3 KCl

MgCl₂

DTT

Storage buffer

50 mM TrisHCl, pH 8.3

100 mM NaCl

1 mM EDTA

0.1 mM DTT

0.1% Triton X-100

50% glycerol

Two step RT-PCR result

尉徠生物科技有限公司

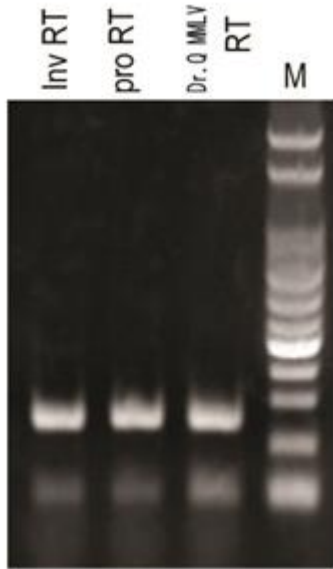
FUTURE SCIENTIFIC CO.,LTD

地址：桃園縣龜山鄉文化一路259號工學大樓1F創新育成中心5884室

TEL：(03)211-8800#5884；(03)211-8299 MOBILE：0955-103293

Dr. Q 分子生物試劑

Activity Assay



Two steps RT-PCR

200 units of enzyme are used to produce cDNA from 1 μ g of a 1.2kb control RNA. The minimum specification is 120ng of first strand cDNA made from 1 μ g of RNA. The cDNA product must be >90% full length.

Contaminant Activity

To test for endonuclease activity, 1 μ g of Type I supercoiled plasmid DNA is incubated with 500 units of M-MLV Reverse Transcriptase in 1X Reaction Buffer for one hour at 37°C. Following incubation, the supercoiled DNA is visualized on an ethidium bromide- stained agarose gel to verify the absence of visible nicking or cutting (analysis on 0.4 μ g of DNA).

Physical Purity

The purity is >90% as judged by SDS-polyacrylamide gels with Coomassie® blue staining.

尉徠生物科技有限公司

FUTURE SCIENTIFIC CO.,LTD

地址：桃園縣龜山鄉文化一路259號工學大樓1F創新育成中心5884室

TEL：(03)211-8800#5884；(03)211-8299 MOBILE：0955-103293