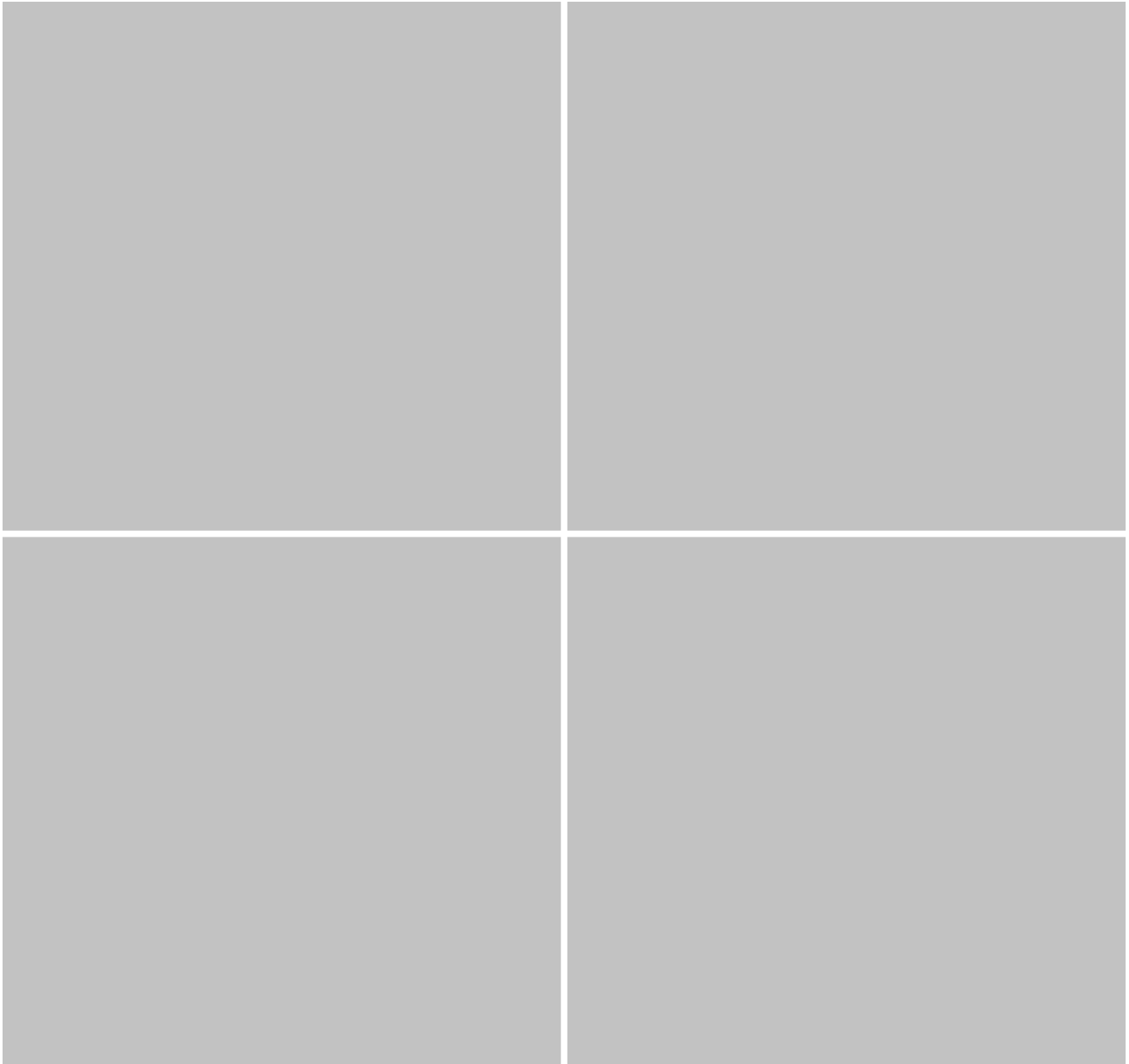


# HERMLE

LABORTECHNIK



## Accessories

Z 400 ■ Z 400 K

Z 383 ■ Z 383 K

# Accessories



- Maximum volume 2.000 ml (4 x 500 ml)
- Spin many tubes at once (e.g. 48 x 15 ml)
- Inserts and rotors for microtiter plates
- High speed angle rotors



- Wide selection of tube types (e.g. Vacutainer) and tube sizes (1,5 ml up to 500 ml)
- angle rotors for "Falcon"-type-tubes
- Hermetically sealable rotors for centrifuging hazardous substances



## Rotor/Bucket



### Rectangular bucket: 610.000



### Round bucket: 611.000

Swivel rotor 4 x 250 ml  
Order No.: 220.86 V01

Acceleration in sec.: Z 383 37  
Deceleration (min./max.): 50/169  
Speed max. (rpm): 5.000  
RCF-value (x g): 4.640  
Centrifugal radius (cm): 16,6  
Temperature at n-max.: 2°C

Z 400 45/103  
51/97  
3.500  
2.273  
16,6  
-8°C

Acceleration in sec.: Z 383 37  
Deceleration (min./max.): 50/169  
Speed max. (rpm): 5.000  
RCF-value (x g): 4.696  
Centrifugal radius (cm): 16,8  
Temperature at n-max.: 2°C

Z 400 45/103  
51/97  
3.500  
2.301  
16,8  
-8°C

| Volume                 | 5 ml    | 7 ml    | 15 ml   | 15 ml           | 25 ml   | 50 ml   | 50 ml          | 50 ml   | 80 ml   | 85 ml   | 100 ml  |
|------------------------|---------|---------|---------|-----------------|---------|---------|----------------|---------|---------|---------|---------|
| Ø in mm                | 13      | 13      | 17      | 17              | 24      | 28,5    | 29             | 34      | 44      | 38      | 40      |
| Len th min./max. (mm)  | 55/75   | 90/100  | 85/120  | 120             | 90/115  | 90/120  | 116            | 90/115  | 90/120  | 90/125  | 90/120  |
| Tubes per rotor        | 80      | 80      | 48      | 24 <sup>1</sup> | 20      | 8       | 8 <sup>2</sup> | 8       | 4       | 4       | 4       |
| Radius correction (cm) | 0,6     | 0,6     | 0,7     | 0,3             | 0,6     | 0,4     | 0,4            | 0,6     | 0,6     | 0,4     | 0,6     |
| Order No.              | 710.014 | 710.013 | 710.010 | 710.011         | 710.009 | 710.006 | 710.007        | 710.005 | 710.004 | 710.003 | 710.002 |
| Len th min./max. (mm)  | 55/75   | 100     | 105/120 | 120             | 85/120  | 95/130  | 116            | 85/120  | 85/110  | 80/120  | 114     |
| Tubes per rotor        | 48      | 48      | 28      | 16              | 8       | 4       | 4              | 4       | 4       | 4       | 4       |
| Radius correction (cm) | 0,5     | 0,5     | 0,5     | ---             | 0,5     | 0,2     | 0,3            | 0,7     | 0,7     | 0,2     | 0,2     |
| Order No.              | 711.011 | 711.010 | 711.008 | 711.009         | 711.007 | 711.005 | 711.006        | 711.004 | 711.003 | 713.011 | 713.010 |

| Volume                 | Vacutainer          |            |            |         |         |         | Sarstedt |            |            |           |         |
|------------------------|---------------------|------------|------------|---------|---------|---------|----------|------------|------------|-----------|---------|
|                        | 190 ml <sup>3</sup> | 250 ml     | 4,5 / 5 ml | 5 ml    | 8 ml    | 12 ml   | 2 - 4 ml | 3,2 - 6 ml | 4,5 - 5 ml | 9 - 12 ml | 25 ml   |
| Ø in mm                | 61                  | 61         | 13         | 12,5    | 16      | 16      | 11,5     | 15,3       | 13         | 16,5      | 25      |
| Len th min./max. (mm)  | 138                 | 100/120    | 85/118     | 61/115  | 75/115  | 85/120  | 62/120   | 50/120     | 85/118     | 83/120    | 80/120  |
| Tubes per rotor        | 4                   | 4          | 56         | 56      | 48      | 48      | 60       | 48         | 60         | 32        | 8       |
| Radius correction (cm) | 0,4                 | 0,3        | 0,4        | 0,4     | 0,4     | 0,7     | 0,6      | 0,4        | 0,4        | 0,4       | 0,4     |
| Order No.              | 710.001             | 710.000    | 710.017    | 710.016 | 710.015 | 710.010 | 710.022  | 710.020    | 710.021    | 710.019   | 710.018 |
| Len th min./max. (mm)  | 138                 | 122        | 85/125     | 60/125  | 75/125  | 105/120 | 65/120   | 50/120     | 85/120     | 85/120    | 80/120  |
| Tubes per rotor        | 4                   | 4          | 32         | 32      | 28      | 28      | 48       | 28         | 48         | 20        | 4       |
| Radius correction (cm) | 0,2                 | 0,1        | 0,2        | 0,2     | 0,2     | 0,5     | 0,5      | 0,7        | 0,5        | 0,2       | 0,2     |
| Order No.              | 713.009             | w.out rack | 713.003    | 713.002 | 713.001 | 711.008 | 713.004  | 713.005    | 713.006    | 713.007   | 713.008 |

<sup>1</sup> without lid: No. 710.012  
Tubes per rotor: 36

<sup>2</sup> without lid: No. 710.008  
Tubes per rotor: 12

<sup>3</sup> only applicable in bucket without lid

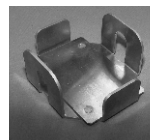


Swivel rotor 4 places  
Order No.: 221.08 V01

Acceleration in sec.: Z 383 50  
Deceleration (min./max.): 40/240  
Speed max. (rpm): 4.500  
RCF-value (x g): 4.211  
Centrifugal radius (cm): 18,6  
Temperature at n-max.: 10°C

Z 400 67/120  
58/110  
3.500  
2.547  
18,6  
2°C

### Carrier: 625.020



Acceleration in sec.: Z 383 50  
Deceleration (min./max.): 40/240  
Speed max. (rpm): 4.500  
RZB-Wert (x g): 3.373  
Centrifugal radius (cm): 14,3  
Temperature at n-max.: -10°C

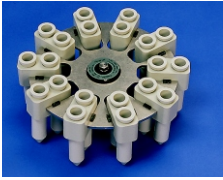
Z 400 67/120  
58/110  
3.500  
2.041  
14,3  
-8°C

| Volume                  | Vacutainer |         |         |                    |         |            | Sarstedt |         |          |            |           |         |
|-------------------------|------------|---------|---------|--------------------|---------|------------|----------|---------|----------|------------|-----------|---------|
|                         | 500 ml     | 250 ml  | 50 ml   | 50 ml <sup>1</sup> | 15 ml   | 1,5/2,0 ml | 5 ml     | 8 ml    | 2 - 4 ml | 3,2 - 6 ml | 9 - 12 ml | 25 ml   |
| Tubes Ø in mm           | 80         | 62      | 28,5    | 28,5               | 16      | 11         | 13       | 16,5    | 12,5     | 16         | 17        | 26      |
| Len th min./max. [mm]   | 126        | 110/130 | 120     | 120                | 120     | 42         | 65/82    | 95/105  | 70/128   | 60/122     | 90/122    | 95/108  |
| Tubes per rotor [pcs.]  | 4          | 4       | 20      | 28                 | 48      | 100        | 88       | 76      | 76       | 52         | 56        | 28      |
| Radius correction in cm | 0,9        | 0,8     | 0,2     | 0,5                | 0,2     | 5,8        | 4,0      | 1,7     | 0,3      | 0,5        | 0,3       | 0,3     |
| Order No.: Tube rack    | 625.004    | 625.003 | 625.002 | 625.001            | 625.000 | 625.013    | 625.009  | 625.010 | 625.008  | 625.007    | 625.006   | 625.005 |

<sup>1</sup> Bucket not sealable

## Rotor/Bucket

## Adapter



Swin out rotor 20 x 15 ml-Falcon  
**Order No.: 221.02 V01**

|                           | Z 383 | Z 400 |
|---------------------------|-------|-------|
| Acceleration in sec.:     | 30    | 30/60 |
| Deceleration (min./max.): | 10/47 | 40/60 |
| Speed max. (rpm):         | 5.000 | 4.000 |
| RCF-value (x g):          | 5.199 | 3.327 |
| Centrifugal radius (cm):  | 18,6  | 18,6  |
| Temperature at n-max.:    | -8°C  | -4°C  |

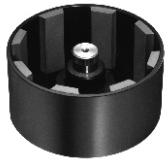
| Order No.: | Tube rack:       | Ø (mm): | Length (min./max.): |
|------------|------------------|---------|---------------------|
| 701.010    | Reduction insert | 17,5    | 95/115              |
| 701.011    | Reduction insert | 13,5    | 95/115              |
| 701.012    | Reduction insert | 13,5    | 70/90               |



Swin out rotor 12 x 50 ml-Falcon  
**Order No.: 221.03 V01**

|                           | Z 383 | Z 400 |
|---------------------------|-------|-------|
| Acceleration in sec.:     | 15    | 30/60 |
| Deceleration (min./max.): | 8/37  | 30/60 |
| Speed max. (rpm):         | 4.250 | 4.000 |
| RCF-value (x g):          | 3.574 | 3.166 |
| Centrifugal radius (cm):  | 17,7  | 17,7  |
| Temperature at n-max.:    | -8°C  | -4°C  |

| Order No.: | Tube rack:     | Ø (mm): | Length (min./max.): |
|------------|----------------|---------|---------------------|
| 603.000    | Inserts, 50 ml | 30      | 105/120             |
| 603.001    | Inserts, 15 ml | 17,5    | 116/125             |



Drum rotor 8 places  
**Order No.: 220.34 V04**

|                           | Z 383  |
|---------------------------|--------|
| Acceleration in sec.:     | 37/320 |
| Deceleration (min./max.): | 37/210 |
| Speed max. (rpm):         | 9.200  |
| RCF-value (x g):          | 10.409 |
| Centrifugal radius (cm):  | 11,0   |
| Temperature at n-max.:    | -2°C   |

| Order No.: | Tube rack:             | Ø (mm): | Length (min./max.): |
|------------|------------------------|---------|---------------------|
| 715.000    | 2 x 15 ml              | 17      | 100                 |
| 715.001    | 1 x 50 ml              | 28,5    | 103                 |
| 715.002    | 11 x 1,5 ml            | 11      | 42                  |
| 715.003    | 15 x 1,5 ml horizontal | 11      | 42                  |
| 715.004    | 20 x 0,75 ml           | 8       | 32                  |
| 715.005    | 6 x 5 ml               | 12      | 75                  |
| 715.006    | 2 x 10 ml Monovette    | 17      | 108                 |
| 715.007    | 1 x 50 ml-Falcon       | 29      | 116                 |
| 715.008    | 1 x 25 ml              | 17      | 108                 |
| 715.009    | 4 x 7,5 ml             | 13      | 100                 |
| 715.010    | 1 x 94 ml              | 38      | 105                 |
| 715.011    | 1 x 15 ml-Falcon       | 17      | 125                 |



6 x 85 ml  
**Order No.: 220.78 V02**

|                           | Z 383  |
|---------------------------|--------|
| Acceleration in sec.:     | 83     |
| Deceleration (min./max.): | 83/547 |
| Speed max. (rpm):         | 15.000 |
| RCF-value (x g):          | 25.910 |
| Centrifugal radius (cm):  | 10,3   |
| Temperature at n-max.:    | 10°C   |

| Order No.:           | Tube rack:       | Ø (mm): | Length (min./max.): |
|----------------------|------------------|---------|---------------------|
| 707.000              | 2 x 15 ml        | 17      | 100                 |
| 707.001              | 1 x 15 ml        | 17      | 103/110             |
| 707.002              | 1 x 30 ml        | 25      | 90/103              |
| 707.003              | 1 x 50 ml        | 29      | 105                 |
| 707.004              | 1 x 50 ml-Falcon | 29      | 118                 |
| 707.003 +<br>708.001 | 1 x 30 ml-glass  | 25      | 105                 |
| 707.003 +<br>708.000 | 1 x 15 ml-glass  | 17      | 100/105             |
| without adapter      | 1 x 85 ml        | 38      | 113                 |

hermetically sealable  
**Order No.: 220.78 V03**

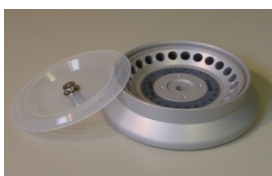


8 x 50 ml  
**Order No.: 220.80 V02**

|                           | Z 383  |
|---------------------------|--------|
| Acceleration in sec.:     | 66     |
| Deceleration (min./max.): | 50/387 |
| Speed max. (rpm):         | 15.000 |
| RCF-value (x g):          | 24.149 |
| Centrifugal radius (cm):  | 9,6    |
| Temperature at n-max.:    | 1°C    |

| Order No.:      | Tube rack:      | Ø (mm): | Length (min./max.): |
|-----------------|-----------------|---------|---------------------|
| 708.000         | 1 x 15 ml-glass | 17      | 100                 |
| 708.004         | 1 x 15 ml       | 17      | 100/105             |
| 708.003         | 1 x 16 ml       | 18      | 100/105             |
| 708.002         | 1 x 30 ml       | 25      | 92/95               |
| 708.001         | 1 x 30 ml-glass | 25      | 105                 |
| without adapter | 1 x 50 ml       | 29      | 105                 |

hermetically sealable  
**Order No.: 220.80 V03**



24 x 1,5 ml / 2,0 ml  
**Order No.: 220.87 V03**

|                           | Z 383  | Z 400  |
|---------------------------|--------|--------|
| Acceleration in sec.:     | 30     | 23/77  |
| Deceleration (min./max.): | 39/320 | 32/124 |
| Speed max. (rpm):         | 17.000 | 13.500 |
| RCF-value (x g):          | 27.464 | 17.320 |
| Centrifugal radius (cm):  | 8,5    | 8,5    |
| Temperature at n-max.:    | 2°C    | 0°C    |

| Order No.: | Tube rack:  |
|------------|---|
| 704.004    | 0,4 ml tubes (Ø 6 x 50 mm)<br>set of adapters (12 pcs.) |
| 704.005    | 0,5 ml tubes (Ø 8 x 32 mm)<br>set of adapters (12 pcs.) |

hermetically sealable  
**Order No.: 220.87 V04**

## Rotor/Bucket



6 x 50 ml  
Order No.: 220.97 V02

|                           | Z 383  | Z 400 |
|---------------------------|--------|-------|
| Acceleration in sec.:     | 18     | 23/49 |
| Deceleration (min./max.): | 21/160 | 26/60 |
| Speed max. (rpm):         | 6.000  | 6.000 |
| RCF-value (x g):          | 3.904  | 3.863 |
| Centrifugal radius (cm):  | 9,7    | 9,7   |
| Temperature at n-max.:    | -10°C  | -10°C |

## Adapter

| Order No.:      | Tube rack:       | Ø (mm): | Length (min./max.): |
|-----------------|------------------|---------|---------------------|
| without adapter | 1 x 50 ml-Falcon | 30      | 105/120             |
| without adapter | 1 x 50 ml        | 30      | 95/115              |
| 708.002         | 1 x 30 ml        | 30      | 92/95               |
| 708.003         | 1 x 16 ml        | 18      | 100/105             |
| 708.004         | 1 x 15 ml        | 17      | 100/105             |
| 603.001         | 1 x 15 ml-Falcon | 17,5    | 116/125             |



12 x 12 ml  
Order No.: 220.85 V01

|                           | Z 383  |
|---------------------------|--------|
| Acceleration in sec.:     | 54     |
| Deceleration (min./max.): | 41/330 |
| Speed max. (rpm):         | 15.000 |
| RCF-value (x g):          | 24.903 |
| Centrifugal radius (cm):  | 9,9    |
| Temperature at n-max.:    | 4°C    |

| Order No.:      | Tube rack: | Ø (mm): | Length (min./max.): |
|-----------------|------------|---------|---------------------|
| 701.003         | 1 x 10 ml  | 16      | 80                  |
| without adapter | 1 x 12 ml  | 16      | 98/109              |

hermetically sealable  
Order No.: 220.85 V02



12 x 15 ml  
Order No.: 220.96 V02

|                           | Z 383  | Z 400  |
|---------------------------|--------|--------|
| Acceleration in sec.:     | 22     | 27/63  |
| Deceleration (min./max.): | 18/125 | 40/115 |
| Speed max. (rpm):         | 6.000  | 6.000  |
| RCF-value (x g):          | 4.186  | 4.186  |
| Centrifugal radius (cm):  | 10,4   | 10,4   |
| Temperature at n-max.:    | -10°C  | -10°C  |

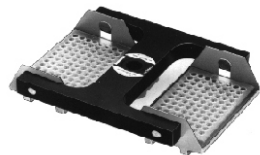
| Order No.: | Tube rack:      | Ø (mm): | Length (min./max.): |
|------------|-----------------|---------|---------------------|
| 701.010    | 1 x 15 ml-glass | 17,5    | 95/115              |
| 701.011    | 1 x 7 ml        | 13,5    | 95/115              |
| 701.012    | 1 x 5 ml (RI )  | 13,5    | 70/90               |



Swing out rotor 2 x Microtiter  
Order No.: 221.16 V01

|                           | Z 383 | Z 400 |
|---------------------------|-------|-------|
| Acceleration in sec.:     | 20    | 30/60 |
| Deceleration (min./max.): | 15/89 | 30/77 |
| Speed max. (rpm):         | 4.500 | 4.500 |
| RCF-value (x g):          | 2.762 | 2.762 |
| Centrifugal radius (cm):  | 12,2  | 12,2  |
| Temperature at n-max.:    | -7°C  | -7°C  |
| Loading height max.:      | 58 mm | 58 mm |
| Loading weight max.:      | 310 g | 310 g |

| Order No.: | Tube rack:                          |
|------------|-------------------------------------|
| 706.000    | 48 x 1,5 ml (2,0 ml) reaction tubes |



Swing out rotor 2 x Microtiter  
Order No.: 220.50 V06

|                           | Z 383 | Z 400 |
|---------------------------|-------|-------|
| Acceleration in sec.:     | 20    | 30/60 |
| Deceleration (min./max.): | 15/89 | 30/77 |
| Speed max. (rpm):         | 3.500 | 3.500 |
| RCF-value (x g):          | 1.424 | 1.424 |
| Centrifugal radius (cm):  | 10,4  | 10,4  |
| Temperature at n-max.:    | -7°C  | -10°C |

| Order No.: | Tube rack:                          |
|------------|-------------------------------------|
| 706.000    | 48 x 1,5 ml (2,0 ml) reaction tubes |



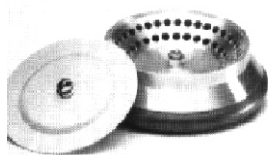
44 x 1,5 ml / 2,0 ml  
Order No.: 220.88 V01

|                           | Z 383         | Z 400         |
|---------------------------|---------------|---------------|
| Acceleration in sec.:     | 17            | 28/37         |
| Deceleration (min./max.): | 22/153        | 33/57         |
| Speed max. (rpm):         | 13.500        | 13.500        |
| RCF-value (x g):          | 14.467/17.523 | 14.467/17.523 |
| Centrifugal radius (cm):  | 7,1/8,6       | 7,1/8,6       |
| Temperature at n-max.:    | -9°C          | -4°C          |

| Order No.: | Tube rack:   |
|------------|--|
| 704.004    | 0,4 ml tubes (Ø 6 x 50 mm) set of adapters (12 pcs.) |
| 704.005    | 0,5 ml tubes (Ø 8 x 32 mm) set of adapters (12 pcs.) |

## Rotor/Bucket

## Adapter



64 x 0,4 ml

**Order No.: 220.92 V01**

|                           | Z 383             | Z 400             |
|---------------------------|-------------------|-------------------|
| Acceleration in sec.:     | 13                | 25/37             |
| Deceleration (min./max.): | 16/154            | 30/57             |
| Speed max. (rpm):         | 13.500            | 13.500            |
| RCF-value (x g):          | 14.059/<br>16.708 | 14.059/<br>16.708 |
| Centrifugal radius (cm):  | 6,9/8,2           | 6,9/8,2           |
| Temperature at n-max.:    | -8°C              | -4°C              |

**Order No.:**  
704.004

0,4 ml tubes (Ø 6 x 50 mm)  
set of adapters (12 pcs.)

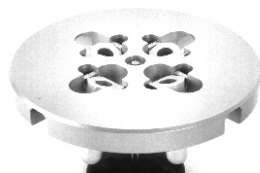


24 x 15 ml

**Order No.: 220.81 V06**

|                           | Z 383           | Z 400           |
|---------------------------|-----------------|-----------------|
| Acceleration in sec.:     | 22              | 25/37           |
| Deceleration (min./max.): | 16/105          | 30/57           |
| Speed max. (rpm):         | 3.500           | 3.500           |
| RCF-value (x g):          | 1.890/<br>1.972 | 1.890/<br>1.972 |
| Centrifugal radius (cm):  | 13,8/<br>14,4   | 13,8/<br>14,4   |
| Temperature at n-max.:    | -10°C           | -10°C           |

| <b>Order No.:</b> | <b>Tube rack:</b> | <b>Ø (mm):</b> | <b>Length (min./max.):</b> |
|-------------------|-------------------|----------------|----------------------------|
| 701.010           | 1 x 15 ml-glass   | 17,5           | 95/115                     |
| 701.011           | 1 x 7 ml          | 13,5           | 95/115                     |
| 701.012           | 1 x 5 ml (RI )    | 13,5           | 70/90                      |



Swin out rotor 4 x 15 ml

**Order No.: 220.73 V02**

|                           | Z 383  |
|---------------------------|--------|
| Acceleration in sec.:     | 36     |
| Deceleration (min./max.): | 36/226 |
| Speed max. (rpm):         | 8.000  |
| RCF-value (x g):          | 9.588  |
| Centrifugal radius (cm):  | 13,4   |
| Temperature at n-max.:    | 3°C    |

| <b>Order No.:</b> | <b>Tube rack:</b> | <b>Ø (mm):</b> | <b>Length (min./max.):</b> |
|-------------------|-------------------|----------------|----------------------------|
| 701.010           | 1 x 15 ml-glass   | 17,5           | 95/115                     |
| 701.011           | 1 x 7 ml          | 13,5           | 95/115                     |
| 701.012           | 1 x 5 ml (RI )    | 13,5           | 70/90                      |
| without adapter   | 1 x 15 ml         | 17             | 100                        |

**HERMLE**  
LABORTECHNIK

HERMLE Labortechnik GmbH  
Gosheimer Straße 56  
78564 Wehingen  
Germany  
Phone + 49-74 26- 96 22-50  
Fax + 49-74 26- 96 22-49  
E-mail: [hermle@hermle.biz](mailto:hermle@hermle.biz)  
Internet: <http://www.hermle.biz>

Technical modification rights reserved.

Version 1 / 2003